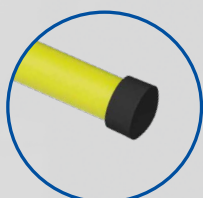
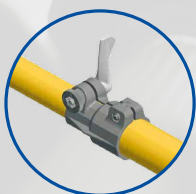
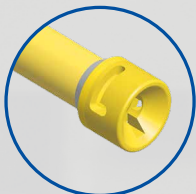


Telescopic rod according to IEC 62193



CO WEX
composite

A COOPERATION OF



Switching rod head

For reliable connection of phase connections.

Tip section according to IEC 60855-1

For safe touching or approaching parts of electrical installations - electrically insulating.

Ratchet lock - patented

For stable locking of the tip section.

Rod section according to IEC 61235

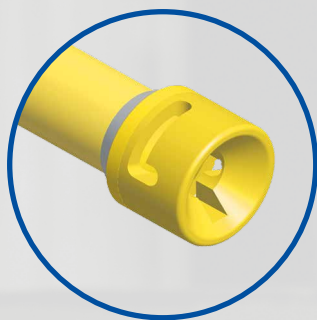
Insulating, for heavy mechanical stress.

Quick-release fastener

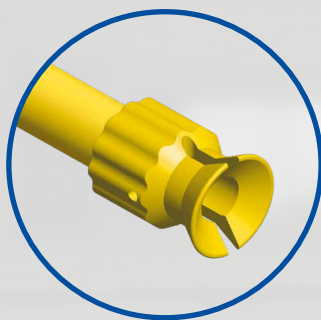
For continuous adjustment of the desired rod length – with high clamping force.

Protective cap

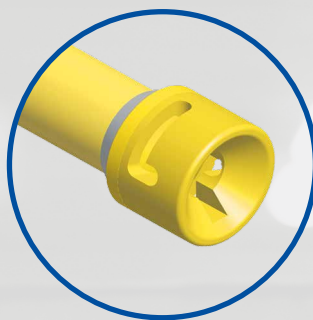
For impact protection on the lowest bar element.



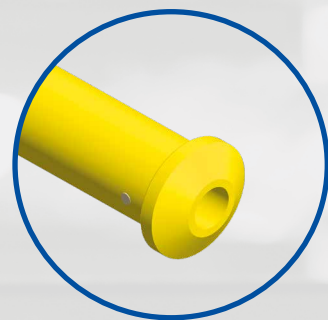
Standard bayonet
32 mm



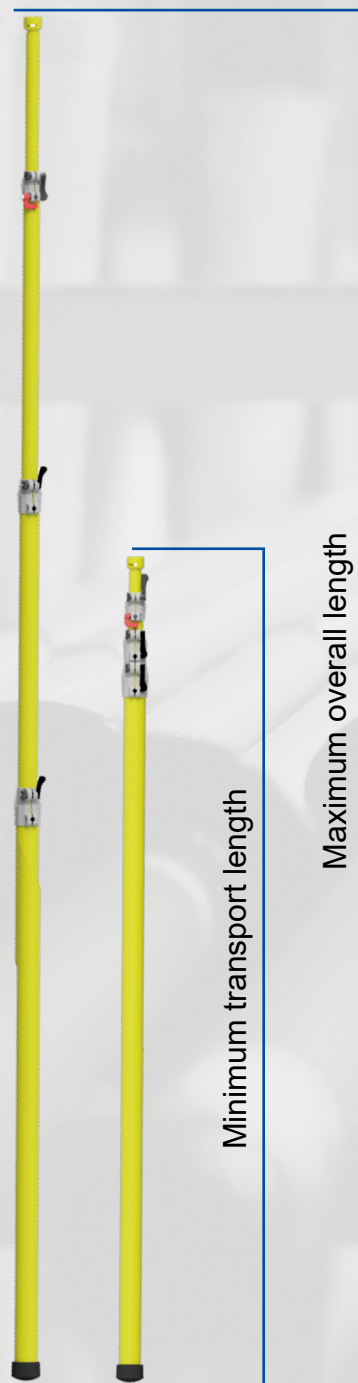
Safety bayonet
60 mm



Spring bayonet
32 mm



Connecting piece for
permanently mounted
phase connectors



For grounding and short-circuiting: Key facts at a glance

Parameter	Value/Execution
Product standard	IEC 62193
Classification	Category: 2; for use with mechanical forces and torques
Area of application	Indoor and outdoor use Humidity 20 to 96% Temperature range -25 to +55 °C
Rod head	Housing for phase connector
Rod stock	Glass fibre reinforced plastic
Rod standard Tip section	IEC 60855-1 Insulating, foamed
Rod standard Rod parts	IEC 61235 Insulating, hollow
Accessories (optional)	Carrying bag, device holder

Three Lengths (without Switching rod head)

Transport length (mm)	Total lengths (mm)	Number of elements
1488	2784	2 pieces
1270	3960	4 pieces
1760	5920	4 pieces

